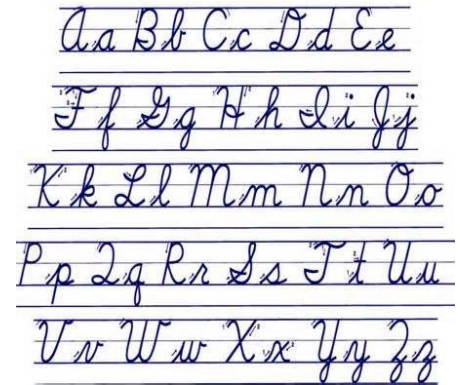


Cursive Writing

777 & Gateway Arch

Directions: Copy the following passages using perfect cursive writing.

- **Shape** – letters formed according to D’Nealian standard.
- **Size** – correct height and width, staying on the line.
- **Spacing** – letters and words demonstrate clarity and flow.
- **Slant** – words slanted slightly and consistently.



International flights have a lot of expenses, so airlines need a lot of passengers just to cover their costs and make a profit. Here’s an idea of their costs. The estimated Boeing 777 airplane purchase price is \$320 million per plane. This plane carries up to 550 passengers depending on the version. Exact information is difficult to find, but estimated operating cost for the Boeing 777 is \$23,000 per hour, with food costs about \$9,500 per flight, and airport fees around \$31,000. As you see, it is important for the airline to keep these planes full and flying without delay.



Amenities at San Francisco’s airport include 4 spas, 3 kids’ spots, 2 yoga rooms, a reading room, a meditation room, and a museum. About forty art exhibits are also displayed in the airport throughout the year.



The Gateway Arch in St. Louis is the world’s tallest at 630 feet. St. Louis was considered the departure point into the Great West, and it was completed in 1965 as a monument to America’s westward expansion. In the mid-1800’s, crossing the Mississippi River into the West represented taking a risk, new opportunities, and a lot of empty land. The arch salutes our country’s accomplishments and patriotism.

Today visitors can travel to the top of the arch and look out its small windows, with a 30-mile view on a clear day. It holds up to 160 visitors at a time. The arch has two emergency staircases, an elevator, and a tram that carries 40 people at a time. The tram car swivels with the curve of the arch like a Ferris wheel. It is a four-minute ride to the top and a three-minute ride back down.